



Fusion UDM Pro

Device Management Software

Technical Specifications

System Requirements

Hardware

- Intel Xeon Server of equivalent
- 8GB RAM Minimum (more if SQL Server on same server)
- 80GB HDD Minimum (more if SQL Server on same server)

Operating System

- Windows Server 2008r2 or Windows Server 2012
- 64 bit OS support Only
- Also supports installation on Windows 7 & Windows 8 Professional for POC purposes

Internet Information Services

- IIS Version 7.0 & 7.5 supported

Organization Management

Group Management Features

- Static Groups
- Group by Subnet and IP Address Range
- Configure Group Devices to Auto-Join Domain
- Auto-Generate host name during discovery and group inheritance process

Group Organization Architecture

- Up to 10 levels of nested groups
- Provides easy administration and configuration of group nodes.
- Tree view & list view based groups
- View devices/terminal nodes by IP Address, MAC or host Name.
- Drag-and-drop of nodes between groups
- Context menu operations for Organization, Group/Subgroup and node level
- Online & offline status indication
- Differentiation of devices by OS (Linux/ Windows/MobileOS) and device type (Notebook, Thin client, Zero Client & Mobile)
- Group settings, group profile, group inheritance and zero configuration features supported

Group Level Functions

The following device settings are configurable at group level for group configuration profile, can apply changes to effect instantly or by scheduling.

- Network: Ethernet, Wi-Fi and Wi-Fi security settings
- Domain: Workgroup settings and Join Domain
- Peripherals: Keyboard, Mouse, Display, Printer settings
- User Interface: Wallpaper, Taskbar, Screen Saver and Auto-logout.
- System: Date and Time, Power settings and Ram Disk
- Administration: User management, Services management, Agent settings, Performance Management setting (History Cleaner of Browser and Windows, Task Scheduler and Start-up Application List).

Microsoft .net Framework

- .net Framework 4.5 supported

Database

- SQL Server 2005, 2008 & 2012 supported
- Express, Standard & Enterprise versions supported

SSL Certificate

- Standard or OpenSSL compatible SSL Certificate

Internet Browser Support

- Mozilla Firefox
- Microsoft Internet Explorer 8/9/10/11
- Google Chrome

- Security: Write Filter, Firewall, Port Settings, and Proxy.
- Upgrade: Remote Software Installation & Uninstallation, File & Folder Transfer, File import and Software Restriction configuration
- Patch Management: Fusion Patch Management, WSUS-based Patch Management
- Connections: RDP, RDS, Citrix ICA, VMware View/PCoIP, Browser and various other connections
- Remote Settings : Shutdown, Restart, Log off, Lock Workstation, Wake-On-LAN, Send message, Remove device, shadowing using VNC & RDP, Clone & Deploy Image & Properties, Client Data Synchronization, Service mode, Projector On/Off, Execute Remote Command
- Shadowing: Single VNC with Proxy, RDP w/o proxy

Group Inheritance

- Configuration of default device settings supported at the group level for inheritance by devices.
- Device Settings: Keyboard, Mouse, Display, Date Time, Taskbar settings, Port security settings, Firewall settings, Remote Agent Settings, Screen Saver Setting, Proxy Setting and Date Time Format, Time Zone Settings, Time Server Synchronisation Settings, Connections, Rename Group, Lock Computer.

Zero Configuration Features

- Group wise auto hostname generation
- Group wise Join Domain
- Repository Connection association
- VNC Password association

Device Discovery

- Agent based device discovery: Discovery using TCP by IP range, Subnet Range, Discovery using UDP Broadcast,
- Auto Discovery by DNS A/CNAME, By DHCP Option Value



Fusion UDM Pro

Device Management Software

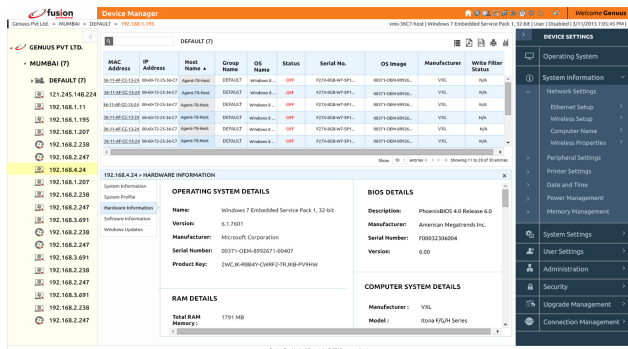
Technical Specifications

Remote Administration & Configuration

System Settings (Some options are view only)

General Information

- General: Hostname, Group Name, IP Address, MAC Address, OS Name, OS Version, Manufacturer, Model, Serial Number, Image Build No, Keyboard Status, Mouse Status, Display Status, Agent Version, LoggedIn User, Last Heart Beat, CPU, RAM Size, Disk Size, Keyboard and Mouse Port
- System: Network, Keyboard, Mouse, Display, Printer, Date Time, CD/DVD settings, User Details, Internet Settings, Firewall, Port Settings



Hardware & Software Information

- Hardware: OS information, Computer system information, Bios information, Processor information, Motherboard details, Hard Disk details, RAM information, Graphics Information, Network Adapter Information, Audio device Information, Device manager Information, Port Details, Keyboard Details, Mouse Details
- List of all software installed with installation information
- List of all installed Windows patches

Device status

- System status: On/Off, Keyboard, Mouse, Display, Write-filter, Storage memory status

System logs

- Event logs: Application, Security & System Logs
- Hardware changes or modification logs
- Software modification logs
- System Dashboard (RAM Memory utilization, CPU Utilization)

Network

- Ethernet settings (DHCP, Manual (Hostname, Domain, IP, Subnet, Gateway, Domain, WINS, DNS))
- Wireless settings (DHCP, Manual (Hostname, Domain, IP, Subnet, Gateway, Domain, WINS, DNS))

- Wireless Security Properties (SSHID, Network type, Encryption Type, Network Key, Auto connect)
- Computer name and Domain setting

Peripherals

- Keyboard setup (Repeat delay, Repeat rate, Keyboard locales)
- Mouse setup (Double click Speed, pointer speed, LH/RH configuration)
- Display & Dual Display setup (Resolution & Frequency, Colour depth, dual display orientation, dual display clone & extended mode settings)

Printers

- Add, Delete, View & Edit local, IP and Network printers/settings
- Date/Time settings
- Time and Date Setup, Time zone settings, Network time synchronization settings
- Date & Time Format Settings

Power Management

- Power Setting (Shutdown procedure, Power Plans / Schemes, Display, Sleep, Hard disk)
- Memory configuration
- Ram disk configuration (size)

User interface settings

- Wallpaper settings
- User interface settings (Auto logon, Desktop GUI operation mode)
- Screensaver settings (Password, Timeout, Themes)
- Taskbar settings

User Management

- User Configuration & management (View users, Add Users)
- Service management
- Listing of services with details & management (Start/Stop/Restart)

Performance management

- Start-up application settings, Registry backup & restore, Task Scheduler, History & Temp File Cleaner.

Remote agent management

- Agent Settings
- Agent Upgrade
- File system

Write filter operations (EWF, FBWF settings, Add/Remove File & Folders Exclusion)

- Network
- Firewall settings (Add/Edit/Delete exceptions, ports & applications)
- Proxy settings





Fusion UDM Pro

Device Management Software

Technical Specifications

Remote Administration & Configuration

continued...

System

- Port Locking for USB, Serial, Parallel ports, Integrated WIFI, Camera, Bluetooth lock setting, Data wipe Settings

File system

- Write filter operations (EWF, FBWF settings, Add/Remove File & Folders Exclusion)

Network

- Firewall settings (Add/Edit/Delete exceptions, ports & applications)
- Proxy settings

System

- Port Locking for USB, Serial, Parallel ports, Integrated WIFI, Camera, Bluetooth lock setting, Data wipe Settings

Upgrade management

- Software upgrade management
- Software installation and uninstallation
- File/Folder Transfer and Transfer file and Execute
- Import File
- Remote application and remote command execution

Patch Management

- Windows Update (List of installed patches, Missing Patches, Failed Patches, Install & Un-install Patches)

Connection Manager

- Microsoft RDS/RDP (Windows)
- Citrix ICA/Receiver (Windows & Linux)
- Citrix PNAgent (Windows & Linux)
- VMware View (Windows & Linux)
- RDesktop (Linux)
- XFreeRDP (Linux)
- Internet Explorer (Windows)
- Mozilla Firefox (Linux)
- Global Connection Settings (Windows & Linux)

Remote Control

- Remote control (shutdown, restart, Log off, workstation lock, Remove Agent, Disable Fusion agent, Wake on LAN)
- Synchronize client settings, Capture partitions & drive structure, Clone and Deploy Image & Properties.
- Remote text messaging to client
- Remote Shadowing & control using VNC and Microsoft RDP
- Service mode of operation
- SmartBoard Projector control operations
- Execute Remote Command operation

Image and Template Management

- Device properties clone, deployment & archival

- Configuration templates: creation and archival for the following set of configurations is available Keyboard, Mouse, Display, Printers, Date Time, Taskbar, Screen Saver, Users, RAM disk setting, Write filter settings, Port security settings, Firewall settings.
- Clone Image and Deploy Image

Repository Manager

- Repository Connection manager - FTP Connection manager, Support for all FTP scenarios or network topologies such as Central and Distributed FTP Settings for File upload and download.
- SFTP : Support for FTP Over SSL, Implicit and Explicit for Software upgrade, patch management, wallpaper features
- File management for: Cloned Image upload, Deploy Image download, Software upgrade and patch management download, File transfer download, Wallpaper download, Screen saver download, SSL certificate download.

Monitoring

- Site level & Group level Monitoring: Device on/off status, peripherals on/off & operations status, Write filter status.
- Activity monitor: Scheduled activity status
- Dash Board: Consolidated status of client on/off, CPU, RAM memory, HDD Storage, Hardware Status (Display, Keyboard, and Mouse).
- Alerts: IP change, Hostname change, HDD storage status, USB Mass Storage, Hardware & Software Changes, Internet URL monitoring.
- Heartbeat: Information sent with heartbeat includes IP Address, MAC Address, Keyboard connection status, Mouse connection status, display connection status, Write filter status.
- Information Bar : Group, Task and Node information

Task Management

- Task manager with master detail view for tasks under execution, scheduled tasks and status of executed tasks.
- Creation of tasks, grouping of tasks with linking and dependency, task sequencing, templates, task scheduling for later execution and recursion.

Reports and Audit Logs

- General Reports: Alerts Report, Write Filter Report, Schedule history report, Email Report.
- Status Reports: Client Status Report, Hard Disk Storage Status Report.
- Monitoring reports: Device monitoring and Application monitoring report
- Audit Logs: Boot, Application, Hardware, Schedule, Idle State, Screen Saver, Software Detail, Server Event, and Internet History.



Fusion UDM Pro

Device Management Software

Technical Specifications

Fusion General Features

Devices and OS's Managed

- Servers, Desktops, Laptops and Thin Clients
- Windows, Windows Embedded, POSReady, GNU and Gio Linux 6

User Management

- User roles & user creation, user role based access rights, user based access rights configuration, Group Wise User Association
- Access control system
- Supports local and ADS domain user authentication. Integrated ADS Authentication.
- Local user access using password protection, User privilege levels, User credentials are stored using AES 256 bit encryption.
- User session management including single instance session restriction, automatic expiry of idle session."

General Features

- Dashboard Widgets
- Main Widgets: Computer Status, Computers By Operating System, Alerts, Patch Summary, Software Summary, Task management
- Fusion client license management
- Heartbeat mechanism to track status of devices and its peripherals
- Automatic device discovery initiated from server or client.
- Client synchronization/Manual refresh and Modular synchronization
- Database backup and restore.
- Real-time Communication using TCP Protocol
- HTTPS/SSL support for secure communications, SSL certificate management for clients
- Citrix user linking with Base OS

Scheduling Engine Features

- Scheduling support for software configuration, software updates and upgrades, patches and application installation/removal.
- Scheduling based on day, date, time, next reboot etc.

Mailer engine

- For auto email communications of status reports and alerts
- Create users, user groups, associate alert reports to be mailed, frequency of mailing etc.
- Can configure all report types and supported alerts to be emailed to configured users

Global settings

- Tree view & Group management configuration
- Heartbeat configuration
- Heartbeat Batch Schedule
- Communication options (HTTP/HTTPS) for LAN/WAN/Internet
- Global settings for application monitoring
- Global settings for service management
- Global settings for software inventory master
- Image capture and deployment global configuration
- Image & properties backup and restore configuration settings
- Remote installation settings
- History report settings
- Database backup and restore settings: automated / periodic database backup
- Mailer engine SMTP server configuration, user management and settings

MAC Address	IP Address	Host Name	Group Name	Status	OS Name	Serial No	OS Image	Manufacturer	Model	Write Filter	Service Mode
00:18:51:5C:A9:38	172.16.99.115	CT2958	PVC VMS	On	Windows...	N/A	76869-640-66878...	Dell Inc.	PowerEdge R310	N/A	Disabled
00:18:51:81:03:39	172.16.11.43	CT588	PVC VMS	On	Windows...	N/A	76869-640-66878...	Dell Inc.	PowerEdge R310	N/A	Disabled
00:18:51:01:A1:7E	172.16.99.26	CT7414	PVC VMS	On	Windows...	N/A	76869-640-66878...	Dell Inc.	PowerEdge R310	N/A	Disabled
00:23:26:38:31:B6	172.16.99.99	Lab1	LENOVO	On	Windows...	N/A	M92p72e-8GB-W7...	LENOVO	3267A2G	Disabled	Enabled
00:23:26:36:5E:85	172.16.99.11	UNV-HHSNK3Q4UQE	LENOVO	On	Windows...	N/A	M92p72e-8GB-W7...	LENOVO	INVALID	-	Disabled
68:50:43:2E:60:66	172.16.99.83	UNV-P6A4DNE0LLB	LENOVO	On	Windows...	890204234	M92p72e-8GB-W7...	LENOVO	tiny q77	Disabled	Disabled
00:60:72:25:03:CF	172.16.11.50	VXL-VMTTIQEC75Q	VXL TC	On	Windows...	F240208050...	F27X-8G-W7-32-1...	VXL	Itana F/G/H Series	Disabled	Disabled
00:60:72:32:00:39	172.16.99.23	VXL006072320039	VXL TC	On	Linux	To be fill...	X64-G6-3.13-01...	VXL	Itana LQ Series	-	-



VXL Instruments Limited

HQ: 17 Electronic City, Hosur Road, Bangalore. India. 561229 . Tel: +91 (0) 80 28523252 . Email: sales@vxl.net

EMEA: Carrington Business Park, Manchester Road, Manchester. M31 4DD. UK . Tel: +44 (0) 161 775 4755 . Email: sales@vxl.net

AMERICAS: 403 Corporate Woods Drive, Magnolia, TX 77354, USA . Tel: (Toll-Free) +1 877 242 7801 . Email: sales@vxl.net

APAC: 4th Floor, Kimatrai Building, 77/79, Maharshi Karve Marg, Marine Lines(E), Mumbai - 400002, India . Tel: +91 (0) 22 42203100 Email: sales@vxl.net



<http://www.vxl.net>